


# U9200E training course

[www.huawei.com](http://www.huawei.com)

- 
- **The main purpose of this course is to conduct a comprehensive production training for our customers about U9200E mobile phone, including the following contents:**
    - ❑ Hardware/Software specifications
    - ❑ Introduction of features
    - ❑ Useful Operation skills
    - ❑ Common Trouble shooting methods
    - ❑ About Technical Support

# Content



<i>Chapter 1</i>	<i>U9200E Product Introduction</i>	<i>1</i>
Chapter 2	U9200E Main Features	2
Chapter 3	Operation skills	3
Chapter 4	Trouble Shooting	4
Chapter 5	About Technical Support	5

# U9200E ID



# Introduction



**HUAWEI U9200E is a smart phone developed by HUAWEI. It is based on Google Android™ 4.0 Operating System. They give you an excellent browsing with the Operating System from Google™, all in a beautiful thin touch screen phone.**

- Android 4.0 (Ice Cream Sandwich)
- Dual core 1.5 GHz CPU TI OMAP4460+IMC XMM6260
- 4.3 inch TFT IPS+ touch screen supporting Multi-touch
- 1GB RAM+8GB ROM
- Wi-Fi 802.11 b/g/n, supporting portable Wi-Fi hotspots
- Support for MHL to HDMI output 1080P 30fps video
- 8 MP main camera + 1.3 MP second camera
- Dolby DM3 sound technology, Dolby Digital Plus decoding technology
- Bluetooth 3.0, Support for Bluetooth keyboard and Bluetooth mouse



# Content



Chapter 1	U9200E Product Introduction	1
<i>Chapter 2</i>	<i>U9200E Main Features</i>	2
Chapter 3	Operation skills	3
Chapter 4	Trouble Shooting	4
Chapter 5	About Technical Support	5

# Hardware Specifications

•Item	•Specifications
•Shape	•Bar-type
•Phone display	•Size: 4.3 inch •Type: TFT IPS+ LCD •Color: 16 M colors •Resolution: HD 1280 * 720
•Dimensions	•129.9 mm (L) × 64.8 mm (W) 10.7mm (T)
•Weight	•About 128 g (including the battery)
•Technology standard	•GSM/WCDMA/HSPA+/HSDPA/HSUPA: 3GPP TS 34.114
•Frequency band	•WCDMA 2100 MHz: 1920–1980 MHz (UL), 2110–2170 MHz (DL) •WCDMA Band II [1900 MHz]: 1850-1910MHz (UL), 1930-1960 MHz (DL) •WCDMA Band IV [1700 MHz]: 1710-1755 MHz (UL), 2110-2155 MHz (DL) •WCDMA Band V [850 MHz]: 824-849MHz (UL), 869-894 MHz (DL) •WCDMA Band VIII [900 MHz]: 880-915 MHz (UL), 925-960 MHz (DL) •GSM 850 MHz: 824–849 MHz (UL), 869–894 MHz (DL) •GSM 900 MHz: 880–915 MHz (UL), 925–960 MHz (DL) •GSM 1800 MHz: 1710–1785 MHz (UL), 1805–1880 MHz (DL) •GSM 1900 MHz: 1850–1910 MHz (UL), 1930–1990 MHz (DL)

# Hardware Specifications

•Network rate	•WCDMA: 384 Kbit/s (UL), 384 Kbit/s (DL) •HSDPA: 21 Mbit/s •HSUPA: 5.76 Mbit/s •GPRS/EDGE: 118.4 Kbit/s (UL), 236.8 Kbit/s (DL)
•SIM card interface	•Standard 6-pin SIM card interface, not support hot swap
•External interface	•Standard Micro USB, microSD Card slot, 3.5mm headset jack
•External memory support	•microSD Card (up to 32GB)
•Processor	•TI OMAP4460 1.5G+IMC XMM6260
•Memory	•ROM: 8 GB •RAM: 1 GB
•Device control:	•soft touch keys (Back, Home, Menu) •Physical Power and Volume key, Charge indicator
•GPS	•GPS/AGPS/SUPL1.0/Glonass
•Temperature	•Operating temperature: -10℃ - +40℃ •Warehouse temperature: -40℃ - +70℃
•Battery	•Capability 2600mAh Li-Polymer •Standby time (Depends on the user operation and network condition): Up to 600 hours (3G) •Talking time (Depends on the user operation and network condition): Up to 800 mins (3G) •Charging Time: 4.5 hours from supplied charger
•Relative humidity	•Working: 5% - 95%
•Camera	•Main camera: 8 MP AF Camera •Front camera: 1.3 MP HD



# Hardware Specifications

•Bluetooth	•Bluetooth 3.0
•Wi-Fi	•802.11b//802.11n, Wi-Fi hotspots
•USB	•Micro USB 2.0, 480Mbit/s
•RF cable maximum transmit power:  •WCDMA Band I[2100MHz]/Band II[1900MHz]/Band IV[1700MHz]/Band V[850MHz]/Band VIII[900MHz]: +23.5dBm (Power Class 3 GSM 850MHz/900MHz: +32.5dBm (Power Class 4)  •GSM 1800MHz/1900MHz: +29.5dBm (Power Class 1)  •EDGE 850MHz/900MHz: 25dBm(+/-3 dBm)  •EDGE 1800 MHz/1900MHz: 24dBm(+/-3 dBm)	
•RF cable static sensitivity:  •WCDMA Band I[2100MHz]/Band II[1900MHz]/Band IV[1700MHz]/Band V[850MHz]/Band VIII[900MHz] : better than -110 dBm/3.84 MHz  •GSM 850 MHz: better than -109 dBm  •GSM 900MHz: better than -109 dBm  •DCS 1800MHz: better than -109 dBm  •PCS 1900MHz: better than -108 dBm	
•Power supply	•90 V–264 V, 50/60 Hz, 1A
•Certification	•FCC, CE, WIFI, BT

# Software Specifications

•Operating system	•Android™ 4.0 (Ice Cream Sandwich)
•Input method	•Android keyboard
•Browser	•HTML, Android Native Browser
•Messaging	• SMS, MMS
•Email	•POP3/IMAP/Exchange
•Multi-media	<ul style="list-style-type: none"><li>• Audio Codec: MP3, WMA2~9, AMR-NB, AMR-WB, AAC, AAC+, eAAC+, MIDI</li><li>• Audio file format: *.mp3, *.mp4, *.3gp, *.wma, *.ogg, *.amr, *.aac, *.flac, *.wav, *.midi</li><li>• Video Codec: MPEG4, H.264, H.263, Real Video7~Real Video10, WMV9, XVID</li><li>• Video file format: *.3gp, *.mp4, *.wmv, *.rm, *.rmvb</li><li>• Image Codec: png, gif (static), jpeg, bmp, AC3</li><li>• Image file format: *.jpeg, *.png, *.gif, *.bmp</li></ul>
•Streaming media	<ul style="list-style-type: none"><li>• Audio Codec: AMR-NB, AAC, AAC+, eAAC+</li><li>• Video Codec: H.263, H.264, MPEG4</li><li>• File Format: *.mp4, *.3gp</li></ul>
•Ringtone	•MIDI, MP3, AMR-NB, WAV, OGG, AAC
•Software update	•HOTA

# Software Specifications

<ul style="list-style-type: none"><li>• USB function</li></ul>	<ul style="list-style-type: none"><li>• Charging</li><li>• MHL to HDMI output</li><li>• Support for the phone to Network Interface Card</li><li>• USB OTG Host</li><li>• U-disk</li></ul>
<ul style="list-style-type: none"><li>• Language</li></ul>	<ul style="list-style-type: none"><li>• English, Spanish (LA), Simplified Chinese, Chinese (TW) , Chinese (HK) , French (EU) , PT(EU) , PT (BR) , German, Spanish (EU) , Turkey, Japanese, Russian, Italian, Swedish, Finnish, Ukrainian, Macedonian, Polish, Norwegian, Greek, Hellenic, Bulgarian, Latvian, Romanian, Slovenian, Hungarian, Croatian, Lithuanian, Estonian, Slovak, Serbian, Bosnian, Danish, Vietnamese, Indonesian, Arabic, Farsi, Dutch, Malay, Thai</li></ul>
<ul style="list-style-type: none"><li>• Camera &amp; Video resolution</li></ul>	<ul style="list-style-type: none"><li>• Main camera:<ul style="list-style-type: none"><li>• Photo(4:3 Non-widescreen): 8M: 3264×2448, 5M: 2592×1944, 3M: 2048×1536, 1.3M: 1280×960, 0.3M: 640×480</li><li>• Photo(16:9 widescreen) : 8M: 3264×1836, 5M: 2592×1458, 3M: 2048×1152, 1.3M: 1280×720, 0.3M: 640×360</li><li>• Video: 1080P, 720P, QHD, VGA , QVGA, QCIF</li></ul></li><li>• Second camera:<ul style="list-style-type: none"><li>• Photo(4:3 Non-widescreen) : 1.3M: 1280×960, 0.3M: 640×480</li><li>• Photo(16:9 widescreen) : 1.3M: 1280×720, 0.3M: 640×360</li><li>• Video: 1280×720, VGA, QVGA, QCIF</li></ul></li></ul>

# Content



Chapter 1	U9200E Product Introduction	1
Chapter 2	U9200E Main Features	2
<b>Chapter 3</b>	<b>Operation skills</b>	<b>3</b>
Chapter 4	Trouble Shooting	4
Chapter 5	About Technical Support	5

# Power Saving Tips

The longevity of battery power depends on the network to which you connect, and how you use your mobile phone.

Try the following to conserve battery power:

- When you do not need 3G services, set your phone to connect to a 2G network.
- When your mobile phone is not in use, turn off the screen backlight.
- Reduce the time it takes for your screen backlight to turn off when your phone is idle.
- Lower the screen brightness.
- Turn off Bluetooth when you are not using it. Only make your phone visible to other Bluetooth devices when you need to establish a Bluetooth connection.
- Turn off Wi-Fi when you are not using it.
- Turn off your phone's GPS receiver when you are not using it.
- Lower the volume.
- Close power-draining programs, when you do not need them.
- Turn off the data service.

# Restoring Factory Data



If you reset your phone to the settings that were configured at the factory, all of your personal data stored on the phone, including information about your Google Account, any other accounts, your system and application settings, and any applications you have downloaded will be erased. Resetting the phone does not erase any system software updates you have downloaded or any files on your microSD card, such as music clips or photos.

1. On the Settings screen, touch Privacy > Factory data reset.
2. When prompted, touch Reset phone, and then touch Erase everything.

The mobile phone resets the settings to the original factory settings, and then restarts.

# Protecting Mobile Phone with a Screen Lock



To keep your data more secure, lock the screen and/or require a screen unlock pattern every time your mobile phone is turned on or wakes up from sleep mode.

1. On the **Settings** screen, **touch Location & security > Set up screen lock > Pattern.**

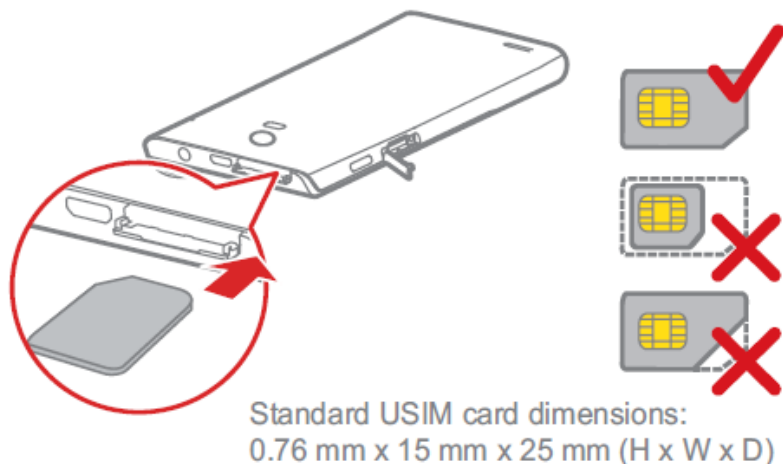
2. Flick your finger vertically, horizontally or diagonally, connect at least four dots in any order you choose. Lift your finger from the screen when you are finished. You must drag your finger between the dots on the screen to create the pattern, not simply touch individual dots.

3. Your mobile phone will record the pattern. Touch **Continue.**

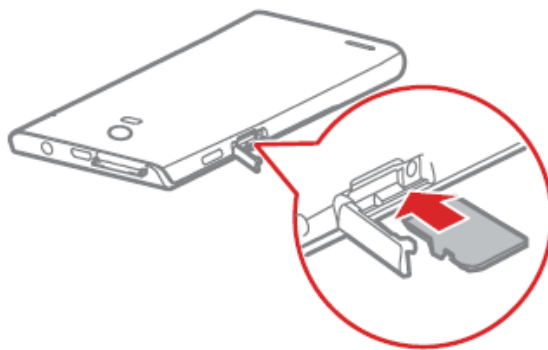
4. When prompted, draw the screen unlock pattern again, and then touch **Confirm.**  
To change your unlock screen pattern, touch **Location & security > Change screen lock.**

# Installing SIM and TF Cards

## ① Install a USIM card



## ② Install a microSD card



The microSD card is optional



# Using the microSD Card as a USB Mass Storage



To transfer all your favorite music and pictures from your PC to your mobile phone's microSD card, set the microSD card as a USB mass storage.

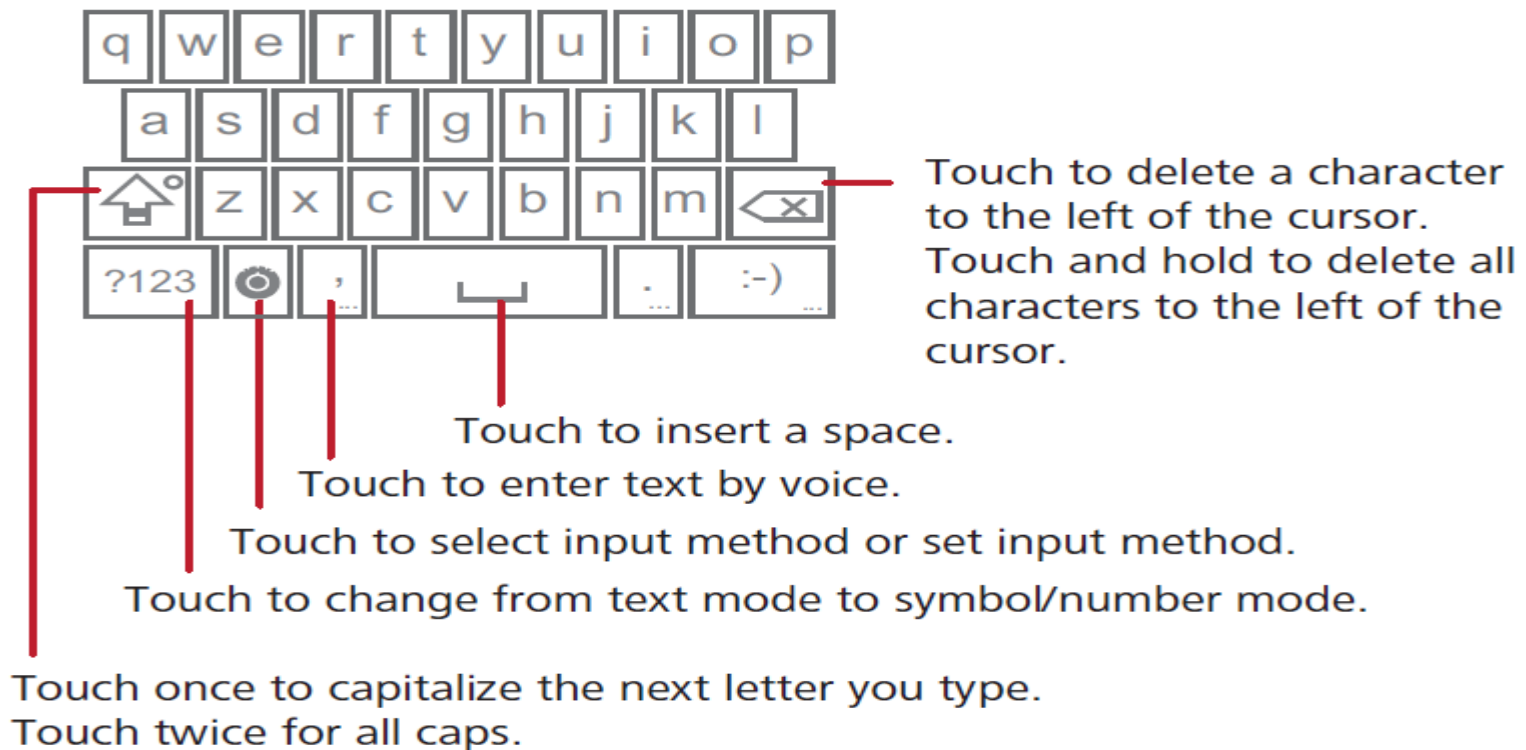
1. Connect your mobile phone to your PC with the USB cable provided. Your PC will detect the microSD card as a removable storage device.
2. Open the notification bar, and then touch USB connected.
3. Touch Turn on USB storage in the dialog box that opens to confirm that you want to transfer files.

You can now transfer files from your PC to your mobile phone's microSD card.

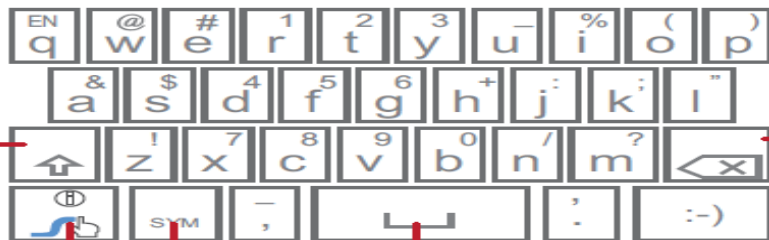
When your microSD card acts as a USB mass storage, your mobile phone will not use this memory space. Ensure that you follow the correct procedures to disconnect the USB mass storage device (your mobile phone) from the PC when you have finished transferring files.

# Using the Android Keyboard

On the Home screen, touch **> Settings > Language & keyboard > Android keyboard > Voice input** to turn on or turn off voice input.



# Using the Swype Keyboard(Optional)



Touch to delete a character to the left of the cursor.  
Touch and hold to delete all characters to the left of the cursor.

Touch to insert a space.

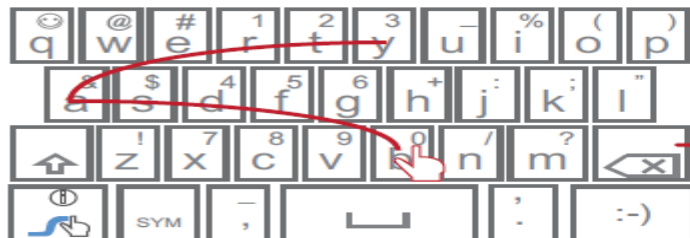
Touch to change from text mode to symbol/number mode.

Touch and hold to get helpful tips.

Touch to get swype functions.

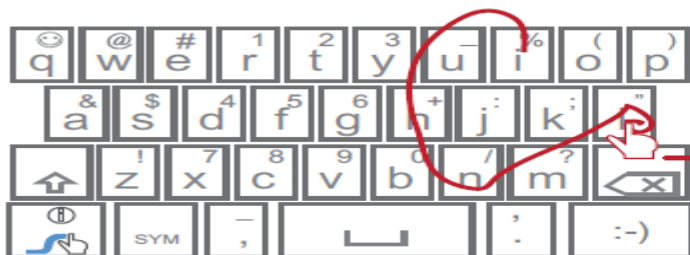
Touch once to capitalize the next letter you type.

Touch twice for all caps.



bay

To enter a word, just drag your finger over the letters in the word.



I'll

To capitalize, go above the keypad.


To enter apostrophes in common words drag through the 'n'.

To enter double letters, circle the letter.

# Locking and Unlocking the Screen



## Locking the Screen

- When your phone is on, press  to lock the screen. When the screen is locked, you can still receive messages and calls.
- If your phone is idle for a while, the screen will lock automatically.






## Unlocking the Screen

1. Press to wake up the screen.
2. Drag the lock icon from left to right to unlock the screen.

If you have set up a screen unlock pattern, you will be prompted to draw the pattern on the screen to unlock it.

## Service Shortcuts



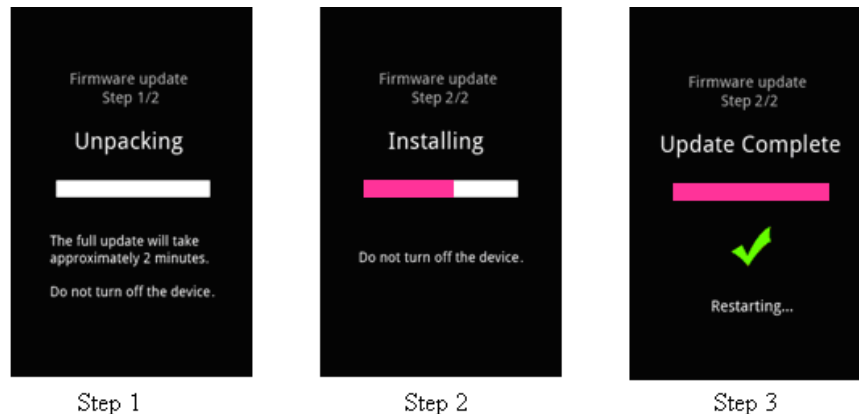
1. Open the notification bar.
  2. Touch  at the top of the screen to switch data services on or off.
- You can also touch  ,  ,  or  turn the corresponding services on or off.

# Force update and system recovery

- 1 Copy the upgrading document to dload file package.

Make sure your handset is power off. Insert the MICRO SD card into the handset.

Pressing the VOLUME UP key and VOLUME DOWN key, and then press the POWER key to power on the phone and enter the Software Upgrade Mode.



- 2 Enter to Settings->Privacy>Factory data reset->Reset phone->Erase everything, to reset to factory settings to recovery the operation system.

# Content



Chapter 1	U9200E Product Introduction	1
Chapter 2	U9200E Main Features	2
Chapter 3	Operation skills	3
<b>Chapter 4</b>	<b>Trouble Shooting</b>	<b>4</b>
Chapter 5	About Technical Support	5

# U9200E Trouble Shooting



## U9200E Maintenance Manual





# Content



Chapter 1	U9200E Product Introduction	1
Chapter 2	U9200E Main Features	2
Chapter 3	Operation skills	3
Chapter 4	Trouble Shooting	4
<i>Chapter 5</i>	<i>About Technical Support</i>	5

# Technical Support

- Huawei Device Official Website  
<http://www.huaweidevice.com>
- Huawei Device E-mail  
E-mail: [mobile@huawei.com](mailto:mobile@huawei.com)
- Huawei Device Forum  
<http://www.huaweidevice.com/cn/technicalIndex.do>

# Thank you

[www.huawei.com](http://www.huawei.com)